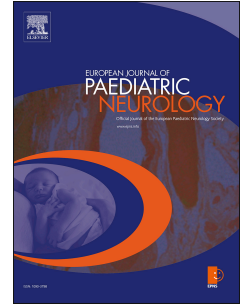


Journal Pre-proof

Participation after childhood stroke: Is there a relationship with lesion size, motor function and manual ability?

Cristina Simon-Martinez, Sandeep Kamal, Fabienne Frickmann, Leonie Steiner, Nedelina Slavova, Regula Everts, Maja Steinlin, Sebastian Grunt



PII: S1090-3798(21)00166-5

DOI: <https://doi.org/10.1016/j.ejpn.2021.09.010>

Reference: YEJPN 2860

To appear in: *European Journal of Paediatric Neurology*

Received Date: 22 March 2021

Revised Date: 19 July 2021

Accepted Date: 20 September 2021

Please cite this article as: Simon-Martinez C, Kamal S, Frickmann F, Steiner L, Slavova N, Everts R, Steinlin M, Grunt S, Participation after childhood stroke: Is there a relationship with lesion size, motor function and manual ability?, *European Journal of Paediatric Neurology* (2021), doi: <https://doi.org/10.1016/j.ejpn.2021.09.010>.

This is a PDF file of an article that has undergone enhancements after acceptance, such as the addition of a cover page and metadata, and formatting for readability, but it is not yet the definitive version of record. This version will undergo additional copyediting, typesetting and review before it is published in its final form, but we are providing this version to give early visibility of the article. Please note that, during the production process, errors may be discovered which could affect the content, and all legal disclaimers that apply to the journal pertain.

© 2021 Published by Elsevier Ltd on behalf of European Paediatric Neurology Society.

Participation after childhood stroke: Is there a relationship with lesion size, motor function and manual ability?

Cristina Simon-Martinez^{1,2}, Sandeep Kamal¹, Fabienne Frickmann¹, Leonie Steiner^{1,3}, Nedelina Slavova^{4,5,6}, Regula Everts¹, Maja Steinlin¹, Sebastian Grunt¹

¹ Division of Neuropediatrics, Development and Rehabilitation, University Children's Hospital, Inselspital, Bern University Hospital, University of Bern, Bern, Switzerland

² Institute of Information Systems, University of Applied Sciences Western Switzerland (HES-SO) Valais-Wallis, Sierre, Switzerland

³ Graduate School for Health Sciences, University of Bern, Bern, Switzerland

⁴ Institute of Diagnostic and Interventional Neuroradiology, Inselspital, Bern University Hospital, and University of Bern, Switzerland

⁵ Department of Diagnostic, Interventional and Pediatric Radiology, Inselspital, Bern University Hospital, University of Bern, Switzerland

⁶ Pediatric Radiology, University Children's Hospital Basel and University of Basel, Switzerland

Cristina Simon-Martinez, cristina.simon@hevs.ch

Division of Neuropediatrics, Development and Rehabilitation, University Children's Hospital, Inselspital, Bern University Hospital, University of Bern, Bern, Switzerland
Institute of Information Systems, University of Applied Sciences Western Switzerland (HES-SO) Valais-Wallis, Sierre, Switzerland

Sandeep Kamal, sandeepkamal@bluewin.ch

Division of Neuropediatrics, Development and Rehabilitation, University Children's Hospital, Inselspital, Bern University Hospital, University of Bern, Bern, Switzerland

Fabienne Frickmann, fabienne.frickmann@gmail.com

Division of Neuropediatrics, Development and Rehabilitation, University Children's Hospital, Inselspital, Bern University Hospital, University of Bern, Bern, Switzerland

Leonie Steiner, Leonie.Steiner@insel.ch

Division of Neuropediatrics, Development and Rehabilitation, University Children's Hospital, Inselspital, Bern University Hospital, University of Bern, Bern, Switzerland
Graduate School for Health Sciences, University of Bern, Bern, Switzerland

Nedelina Slavova, Nedelina.Slavova@insel.ch

Institute of Diagnostic and Interventional Neuroradiology, Inselspital, Bern University Hospital, and University of Bern, Switzerland
Department of Diagnostic, Interventional and Pediatric Radiology, Inselspital, Bern University Hospital, University of Bern, Switzerland
Pediatric Radiology, University Children's Hospital Basel and University of Basel, Switzerland

Regula Everts, Regula.Everts@insel.ch

Division of Neuropediatrics, Development and Rehabilitation, University Children's Hospital, Inselspital, Bern University Hospital, University of Bern, Bern, Switzerland

Maja Steinlin, Maja.Steinlin@insel.ch

Division of Neuropediatrics, Development and Rehabilitation, University Children's Hospital, Inselspital, Bern University Hospital, University of Bern, Bern, Switzerland

Sebastian Grunt, Sebastian.Grunt@insel.ch

Division of Neuropediatrics, Development and Rehabilitation, University Children's Hospital, Inselspital, Bern University Hospital, University of Bern, Bern, Switzerland

Corresponding author:

Cristina Simon-Martinez

cristina.simon@hevs.ch

Rue de Techno-Pôle 3 3960 Sierre (Switzerland)

Abstract

Background

Childhood arterial ischemic stroke (AIS) is associated with significant morbidity with up to 50% of affected children developing hemiparesis. Hemiparesis is assumed to influence participation within the peer group, but it is unclear to what extent its severity affects participation in different areas of social life.

Methods

Thirteen children (mean age 9y6m) with AIS (6 without hemiparesis, 7 with hemiparesis) and 21 controls (mean age 9y8m) participated. We scored hemiparesis severity with hand strength asymmetry (pinch and grip strength), measured with a dynamometer. We assessed manual ability (ABILHAND-Kids), socioeconomic status (Family Affluence Scale) and participation (Participation and Environment Measure – Children and Youth). From structural MRI, we measured lesion size. We investigated differences in participation and its relationship with hemiparesis severity using non-parametric partial correlations (controlling for lesion size, manual ability, and socioeconomic status), interpreted as absent ($r < 0.25$), weak ($r = 0.25-0.50$), moderate ($r = 0.50-0.75$) or strong ($r > 0.75$). Analyses were performed in jamovi 1.6.3.

Results

Children with AIS (with or without hemiparesis) showed reduced participation frequency at school ($p < 0.001$), whilst participation at home and in the community resembled that of their peers. Severity of hemiparesis was moderately related to frequency and involvement at home and to involvement and desire for change in the community, although unrelated to school participation.

Conclusion

Reduced participation in school life requires close attention in the follow-up of children with AIS - regardless of the severity of hemiparesis. Participation at home and in the community is related to hemiparesis severity and may be improved with participation-focused motor intervention strategies.

Keywords (MeSH terms): Ischemic Stroke, Patient Participation, International Classification of Functioning, Disability and Health, Hand Strength, Upper Extremity, Socioeconomic Factors.

Number of tables: 2

Number of figures: 3 (of which 2 (Fig 2 and Fig 3) in colour (online only))

Highlights:

- Children with stroke participate less frequently at school but are equally involved.
- Decreased participation at school is not related to hemiparesis severity.
- Participation at home and in the community are related to hemiparesis severity.

1. Introduction

Meeting friends, socializing, or doing sports are activities that we normally like doing and are part of our routine in different life situations (i.e., home, work, and community). The International Classification of Functioning, Disability and Health for Children and Youth (ICF-CY) defines participation as involvement in such life situations¹. Participation is, however, not defined as what a person can or wants to do. Children typically participate with high frequency and involvement in a variety of activities. Participation is an important activity in our lives, as it is crucial for the development of an identity, but also to become active, independent members of the society. The level of participation may be hampered by an event such as a stroke during childhood.

Arterial ischemic stroke (AIS) is a rare but devastating disease that may occur during childhood and may result in persisting hemiparesis in up to 50% of children²⁻⁵. Hemiparesis refers to the deficits (e.g., increased muscle weakness and spasticity, impaired range of motion, poor grasping and releasing skills) in one side of the body, contralateral to the hemisphere where the stroke occurred. These motor deficits may affect participation and quality of life^{6,7} in children with AIS.

Participation-based studies in children with AIS are scarce but have emerged in recent years⁸. Available studies identify reduced participation and social interaction with moderate difficulty, with some children having low or no such difficulties^{9,10}. Strikingly, poor participation in the community has been related to reduced quality of life in children with developmental disabilities¹¹. Despite a poorer participation in individual physical activities, team sports and cycling, research shows that children with motor impairment (resulting from AIS or other aetiologies) enjoy the activities as much as typically developing peers¹², when they participate in such activities. Studies have also reported that children with AIS have reduced social acceptance and social support from their peers¹³ and they often change friendships¹⁴. As the clinical picture after AIS is very heterogeneous, some studies have focused on clinical subgroups. Greenham et al (2018) recently reported no differences in participation between subgroups of children with AIS (neonatal (<29 days) or childhood-onset (>29 days)) using the Participation and Environment Measure - Children and Youth (PEM-CY) questionnaire¹⁵. Given this evidence and that not all the children with AIS will have hemiparesis, it is important to further investigate restrictions in participation between children with AIS, and to what extent such restrictions are related to hemiparesis.

In the ICF-CY, in addition to the domain of participation, a distinction is made between body structures and body functions, activity, person-related factors and environmental factors. These domains interact with each other and influence the individual's health condition. Whilst the relationship between these components and participation has been previously studied in children with cerebral palsy (irrespective of the type of brain lesion)¹⁶⁻²⁰, there is a limited number of studies in children with AIS. Participation restriction was shown to be linked to subcortical AIS (*body structures*)¹⁰, impairments in gross motor function (*body functions*)¹⁵, and limitations in manual ability (*activity*)²¹. Additionally, a key predictor of participation at home and in the community in children with AIS is fatigue (*body functions*)¹⁵. Impaired cognition and more behavioural problems (cognition and behaviour, *body functions*) also positively correlate with restrictions in participation²¹.

Environmental factors are defined as “the physical, social and attitudinal environment in which people live and conduct their lives”¹. They have a crucial role in how a child participates. The involvement of the child in different life situations is very much linked to the family environment, which is integral to understanding participation in early childhood¹. The changes in these environmental factors may have an impact on the person's competencies and independence. Whilst there is no specific evidence for the interaction between environmental factors and participation in children with AIS, there is evidence showing that higher levels of family cohesion, higher incomes, better family coping strategies, and lower levels of stress may facilitate participation in children and adolescents with cerebral palsy^{16,17}.

Overall, there are some hints on what participation in children with AIS looks like, although much remains unknown. It remains unclear how a hemiparesis after AIS influences the participation pattern and to what extent participation in children with AIS is related to different components of the ICF-CY. To develop new treatment strategies to improve participation in children diagnosed with AIS, their participation restrictions and the factors that influence them need to be better understood. Therefore, the aim of this study was threefold. Our **first aim** was to identify differences in participation patterns in various life situations (home, school, and community) between children diagnosed with AIS with and without hemiparesis and typically developing peers. The **second aim** was to explore the relationship between participation restriction and the different ICF-CY components in an AIS cohort. Lastly, the **third aim** was to examine the unique relation between participation restriction and severity of hemiparesis controlling for the other influencing ICF-CY components (lesion size, manual ability and socioeconomic status).

2. Materials and Methods

2.1. Participants

Children and adolescents with and without AIS were recruited as part of the ‘Hemispheric Reorganization (HERO)’ study²² that investigated cortical reorganization after paediatric AIS. The participants with AIS were recruited from the population-based Swiss Neuropediatric Stroke Registry². Children and adolescents of the AIS group were *included* if: (i) they had an AIS before the age of 16 years (confirmed by MRI or computed tomography) at a chronic stage (i.e., at least two years prior to the study), (ii) an age of at least 5 years old at the time of assessment. *Exclusion* criteria were (i) those related to MR compatibility, (ii) concomitant neurological disorders and (iii) behavioural problems that would interfere in the assessment. Of the 283 patients from the Swiss Neuropediatric Stroke Registry who met the eligibility criteria and were contacted, a final sample of 28 patients agreed to participate in the HERO study (more details about the reasons for not participating can be found in the original publication of the HERO study)²³. A control group of typically developing peers was recruited through advertisement in the university hospital intranet and flyers. The inclusion criterion was the absence of any developmental disorder, the exclusion criteria were the same as for the AIS group. Two years after the initial assessment, participants of the HERO study were contacted and asked to complete an additional questionnaire regarding participation and socioeconomic status. For the questionnaire, only native German speaking families whose children were younger than 17 years old at the time of completing the questionnaire were contacted. The final study population of the present sub-study consisted of 13 children diagnosed with AIS and 21 typically developing peers. The Research Ethics Committee of Berne, Switzerland approved the SNPSR, the HERO study, and the present study. All parents and legal guardians provided written consent and the participants assented to partake in the study, in accordance with the Declaration of Helsinki.

Evaluation

We gathered demographic and other basic data (sex, age at assessment, age at stroke and time since stroke) from the SNPSR and at the time of the first assessment. Handedness was determined at the first assessment (thus in the chronic stage after AIS) with the Edinburgh Handedness Inventory²⁴.

For the assessment of childhood AIS at all the ICF-CY levels we included brain lesion size (body structure), hand strength (body function, motor), manual ability (activity), participation (participation patterns of children at home, school and in the community) and socioeconomic status and parents’ educational level (environment) (Figure 1). We focused on upper limb impairments in this population as our cohort could walk independently, and the lower limb impairments probably had a minimal impact on participation, compared to other children who may have to ambulate with technical aids.

At the **body structure level**, we included *lesion size*. Lesion size was measured with the ABC/2 method. The exact procedure for calculating the lesion size was described previously^{25,26}. Briefly, lesions were marked in the structural T1 images and their volume was calculated based on these markings. The volume of the lesion was divided by the total intracranial volume and expressed in mm³. Additionally, we extracted the *location and side of the lesion* for completeness of the database, although these data were not used for statistical analyses. Lesions were classified according to their location: cortical, subcortical, and combined cortical and subcortical. Lesion laterality was categorized into left, right, and bilateral.

At the **body function level**, we included *hand strength*, as it is a simple measure that reflects the child's ability to generate force and is barely influenced by other cognitive or strategic aspects. Additionally, compared to other existing measures of upper limb function, hand strength seems to be the least related to cognitive function in children with stroke²⁷. Hand pinch and grip strength was used as an index for the body function impairments after AIS that would quantify the severity of hemiparesis motor impairment. Hand strength was evaluated with a dynamometer (30 psi pneumatic dynamometer Baseline®, USA and a 30 lb mechanical pinch gauge, Baseline®, USA). First, the maximum voluntary contraction of each hand was recorded three times and the average value was retained. Next, we calculated the mean of the pinch and grip average values. The asymmetry index to quantify the severity of hemiparesis was computed as the percent of asymmetry of hand strength between the dominant and the non-dominant side, as follows:

$$\text{Asymmetry index} = \frac{\text{SCORE}_{\text{dominant side}} - \text{SCORE}_{\text{non dominant side}}}{\text{SCORE}_{\text{dominant side}} + \text{SCORE}_{\text{non dominant side}}} * 100$$

A higher score indicates larger asymmetry toward the dominant side, whilst a score of 0 indicates symmetric strength between both hands.

At the **activity level**, we included *manual ability*, evaluated with the ABILHAND-Kids, which is a valid and reliable measure to assess manual ability through the scoring of 21 daily activities. The difficulty experienced by the child to perform the required tasks is rated on a 3-point ordinal scale by the parents²⁸. We used the version developed for children with unilateral cerebral palsy, which we translated into German for this project.

We measured **participation** with the Participation and Environment Measure for Children and Youth (PEM-CY), in German. This questionnaire examines participation frequency, the extent of involvement, and desire for change in sets of activities typical for the home, school, or community^{29,30}. Participation *frequency* in percentage provides an indicator of the frequency of engagement in activities (higher scores indicate greater frequency). Participation *involvement* indicates the extent to which a child is engaged in the activities, including social engagement (higher scores indicate greater involvement). The *percent of activities* indicates the range of activities the child participates in (higher scores indicate greater number of activities). The *desire for change* indicates the satisfaction with the current participation (higher scores indicate greater desire for change).

To evaluate the impact of **environmental** factors influencing participation, we included measures of *socioeconomic status* (SES) by using the Family Affluence Scale. This scale is commonly used to identify the SES of children and adolescents in studies on child health and well-being³¹. It includes four questions that reflect the privileges that the family may have. Additionally, we included questions about the *parents' educational level* (one for each parent). The used questions can be found in Appendices (Document A.1). The final scale score ranged from 0 to 15, with higher values indicating more privileged families with higher parental educational level.

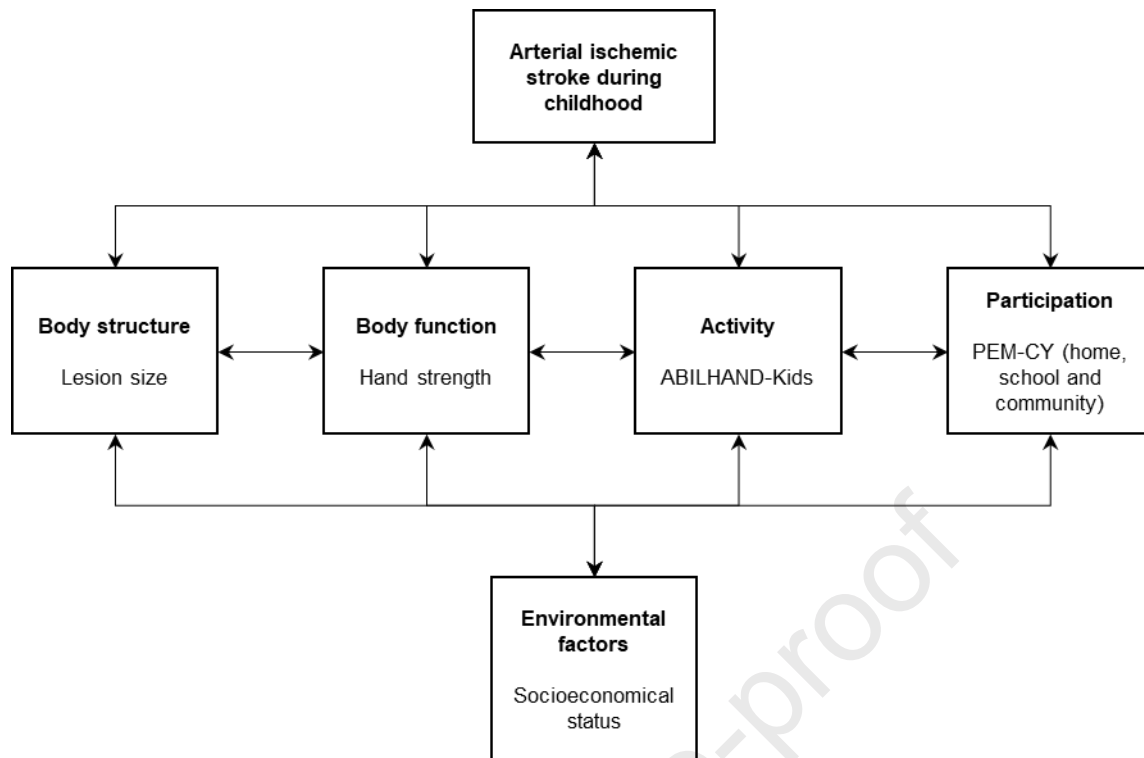


Figure 1. Scheme of the International Classification of Functioning (Children and Youth version) and the outcome measures used in this study.

2.2. Statistical analyses

Due to the low number of participants, we opted to perform non-parametric statistics. For the **first aim** (*what are the differences in participation between groups?*), we first divided the AIS cohort into those who developed a hemiparesis and those who did not. For that, we used the motor sub-score of the Paediatric Stroke Outcome Measure and those who scored 0 were labelled as AIS without hemiparesis and those who scored more than 0 were labelled as AIS with hemiparesis. To investigate differences in participation characteristics between the three groups, we conducted the Kruskal-Wallis test and the respective pairwise comparisons with the Dwass-Steel-Critchlow-Fligner test ³². The level of significance was set at $\alpha=0.05$. To report effect sizes from the Kruskal-Wallis tests, we used epsilon square (ϵ^2) ³³. An ϵ^2 of 0 would mean no differences and no influence, while 1 would indicate a full dependency. We interpreted effect sizes as none (<0.25), weak ($0.25-0.50$), moderate ($0.50-0.75$) or strong (>0.75) ³³.

The second and third aims focused on the AIS cohorts. For the **second aim** (*what is the relation between severity of hemiparesis (hand strength asymmetry) and participation?*), we used non-parametric correlations to document the correlation between each pair of variables included in the study. To answer our **third aim** (*what is the unique relation between hemiparesis severity and participation?*), we ran non-parametric partial correlations, as they allow for the elimination or control of possible influencing variables, to investigate the unique relation between the severity of hemiparesis and participation, controlling for lesion size, manual ability, and SES. All correlations were reported with Spearman's rho and interpreted as absent (<0.25), weak ($0.25-0.50$), moderate ($0.50-0.75$) or strong (>0.75). The level of significance was set at $\alpha=0.05$.

All analyses were conducted with jamovi for Windows v1.6.3.

3. Results

3.1. Participants

Thirty-four children participated in the study: 13 with AIS and 21 controls. In the AIS cohort, there were 6 children without hemiparesis and 7 with hemiparesis. The three cohorts were similar in age and sex, and there were more right-handed participants in the control cohort (Table 1). Between the AIS cohorts (with and without hemiparesis), there was no difference in lesion side or location, but lesion size was larger in the cohort with hemiparesis ($p=0.03$, Table 1).

Table 1. Demographic characteristics of each cohort and group comparison.

		Controls (n=21)	AIS without hemiparesis (n=6)	AIS with hemiparesis (n=7)	p
Age at motor eval.	Mdn (IQR)	9.8 (7.2-10.8)	10.1 (8.6-11.3)	9.5 (9.1-12.3)	0.90
Age at PEM-CY eval.	Mdn (IQR)	12.0 (9.0-13.0)	13.0 (12.0-14.0)	13.0 (12.0-15.5)	0.39
Age at stroke	Mdn (IQR)		2.4 (0.8-4.6)	1.5 (0.8-4.4)	0.77
Sex	Female (n (%))	8 (38)	2 (33.3)	2 (28.6)	0.90
	Male (n (%))	13 (62)	4 (66.7)	5 (71.4)	
Handedness	Left-handed (n (%))	2 (10)	0 (0.0)	4 (57)	0.01*
	Right-handed (n (%))	19 (90)	6 (100.0)	3 (43)	
Lesion Side	Left (n (%))		5 (83)	6 (86)	1.00
	Right (n (%))		1 (17)	1 (14)	
Lesion Size	Mdn (IQR)		0.0 (0.0-0.6)	2.6 (1.8-3.2)	0.03*
Lesion Location	Cortical (n (%))		3 (50.0)	1 (14.3)	0.08
	Subcortical (n (%))		3 (50.0)	2 (28.6)	
	Combined (n (%))		0 (0.0)	4 (57.1)	

Eval., evaluation; Mdn, Median; IQR, interquartile range; n, number of participants; PEM-CY, Participation and Environment Measure - Children and Youth.

3.2. Aim 1 - Differences in participation and other components of the ICF-CY between AIS and control cohorts

We compared the outcomes at all levels of the ICF-CY between the control cohort and each of the AIS cohorts with and without hemiparesis and a summary of this comparison can be found in Table 2. We found differences in **lesion size** (body structure, between AIS cohorts) whereby those with hemiparesis had a larger lesion ($p=0.03$). The **hand strength asymmetry index** (body motor function) was more imbalanced in the AIS with hemiparesis cohort ($p=0.02$). Post-hoc analyses depicted a trend of more asymmetry toward the dominant hand in the AIS with hemiparesis cohort, compared to controls ($p=0.08$). At the activity level, we found group differences in the ABILHAND-Kids ($p<0.001$) that reflected poor **manual ability** in the AIS cohorts compared to the control cohort (post-hoc analyses control vs. AIS (with or without hemiparesis), $p<0.01$), whereas manual ability did not relate to hemiparesis or not.

Table 2. Descriptive statistics (median and interquartile range) of the outcome measures at each level of the ICF-CY in each cohort and group comparison.

	N	Controls (n=21)	AIS without hemiparesis (n=6)	AIS with hemiparesis (n=7)	p (ϵ^2)
Body structure					
Lesion size	13	-	0.0 (0.0-0.6)	2.6 (1.8-3.2)	0.03* (0.38)
Body function					
Hand strength asymm.	34	1.5 (-1.6-3.7)	-3.2 (-4.1--2.5)	18.9 (6.1-38.9)	0.02* [¥] (0.24)
Activity					
ABILHAND-Kids (logits)	34	6.7 (6.7-6.7)	4.4 (3.9-5.9)	3.2 (2.2-5.0)	<0.001* [§] [¥] (0.54)
PEM-CY Home					
Frequency (%)	34	87.1 (78.6-90)	87.1 (82.5-89.6)	81.4 (77.1-83.6)	0.58 (0.01)
Involvement	33	4.3 (4.2-4.5)	4.2 (4.0-4.4)	3.9 (3.8-4.4)	0.17 (0.06)
Activities (%)	34	100 (100-100)	100 (100-100)	100 (90-100)	0.65 (0.01)
Desire for change (%)	33	40 (30-50)	60 (30-60)	50 (30-55)	0.40 (0.02)
PEM-CY School					
Frequency (%)	34	58.6 (50.7-67.1)	25 (21.8-27.1)	22.9 (19.3-24.3)	<0.001* [§] [¥] (0.72)
Involvement	33	4.7 (4.2-5.0)	4.2 (3.6-4.7)	4.5 (4.1-5.0)	0.35 (0.03)
Activities (%)	34	80 (80-100)	70 (60-80)	60 (60-70)	0.04* [¥] (0.13)
Desire for change (%)	33	0.0 (0.0-20.0)	20.0 (0.0-20.0)	20.0 (20.0-87.5)	0.05* (0.13)
PEM-CY Community					
Frequency (%)	34	42.9 (32.9-60.4)	36.4 (23.6-45)	41.4 (32.1-44.3)	0.11 (0.08)
Involvement	33	4.7 (4.1-5.0)	4.2 (3.9-4.4)	4.5 (4.2-4.9)	0.62 (0.01)
Activities (%)	34	80.0 (70.0-90.0)	80.0 (50.0-80.0)	70.0 (60.0-75.0)	0.20 (0.05)
Desire for change (%)	33	10.0 (0.0-20.0)	20.0 (0.0-30.0)	30.0 (5.6-40.0)	0.12 (0.07)
SES	34	13.0 (12.0-15.0)	12.0 (9.2-14.8)	14.0 (11.5-16.5)	0.73 (0.02)

AIS, Arterial Ischemic Stroke; n, number of participants; PEM-CY, Participation and Environment Measure - Children and Youth; ϵ^2 , epsilon square (measure of effect size). Post-hoc analyses: [¥]control vs. AIS with hemiparesis, [§]control vs. AIS without hemiparesis.

At the level of **participation at home**, we found no differences between cohorts ($p>0.05$) and the effect sizes were small ($\epsilon^2<0.10$). **Participation at school** was different between cohorts ($p<0.001$) with a moderate-large effect size (Table 2). Post-hoc analyses indicated that children with AIS (with or without hemiparesis) participated less frequently at school ($p<0.001$) compared to controls. Also, the percentage of activities in which they were involved at school was different ($p=0.04$) and post-hoc analyses showed a trend toward significantly different scores between control and AIS with hemiparesis ($p=0.06$). Similarly, the desire for changing their participation at school was rated higher for the AIS cohorts ($p=0.05$), although it was not significant in post-hoc analyses. **Participation in the community** did not differ between cohorts ($p>0.05$) and the effect sizes were small. Figure 2 depicts the responses of the PEM-CY questionnaire per group and per domain and individual data of the used variables can be found in Appendices (Figure A.1).

At the environment level, we found that the **SES** was not different between cohorts ($p>0.05$).

Participation after childhood stroke

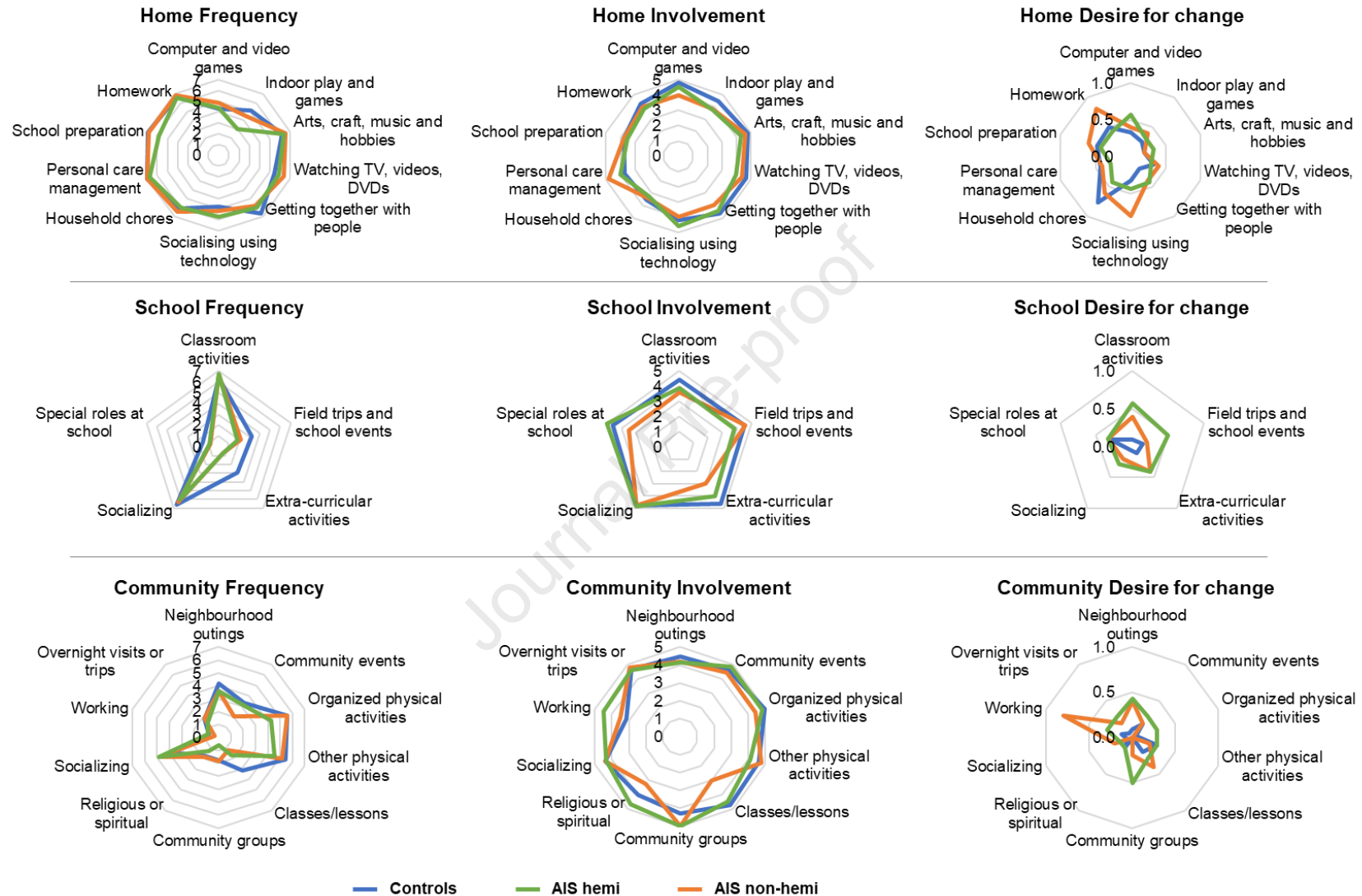


Figure 2. Differences in participation frequency, involvement, and desire to change (at home, school, and in the community) between the control and AIS with or without hemiparesis cohorts for every item of the PEM-CY questionnaire.

3.3. Aim 2 – Bivariate relation between participation and other measures at the ICF-CY levels

We described an overview of the relation (bivariate correlations) between the different levels of the ICF-CY and the measures of participation in Figure 3. We found weak negative relations between **lesion size** and frequency of **participation** at home and school, whereby the larger the lesion the lower the participation frequency. Correlation analyses showed weak to moderate positive relations between lesion size and the involvement at home, school and in the community, suggesting that the larger the lesion size, the higher the involvement. The percent of activities in which the children participated also correlated negatively (weak to moderate) with lesion size, whereby the larger the lesion, the lower the percent of activities. Similarly, the desire for change the participation level at home and in the community negatively and moderately correlated with lesion size, suggesting that the parents would like a larger change in the participation at home and in the community with smaller lesion sizes.

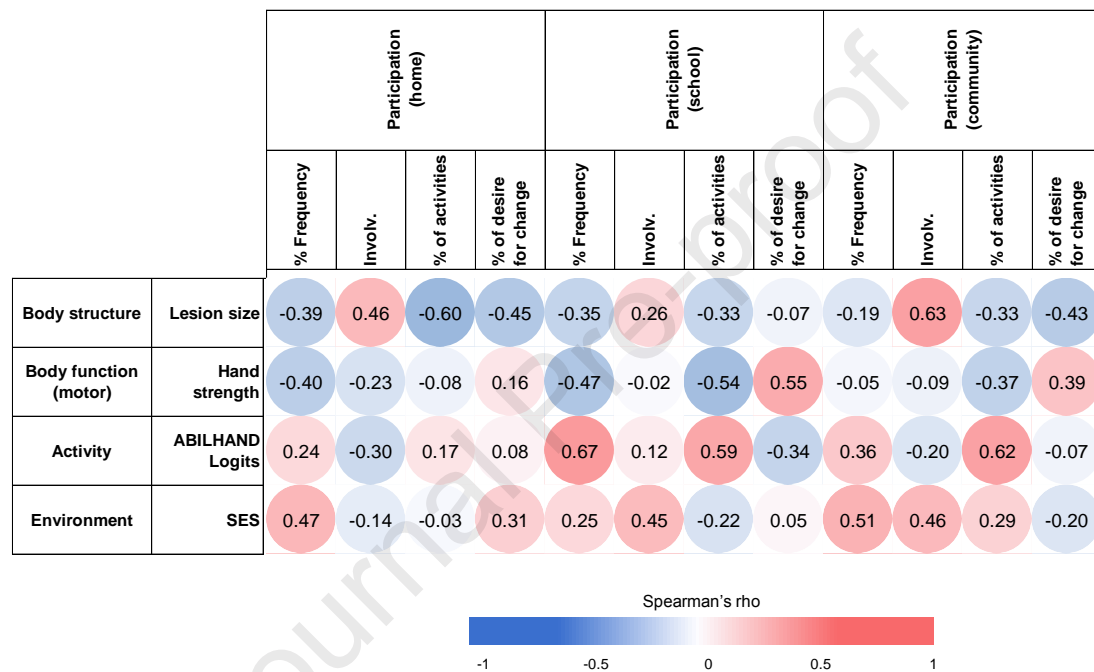


Figure 3. Correlation matrix between the different levels of the ICF model (body structure, body function, activity, participation, and environment) in the AIS (with or without hemiparesis) cohort.

Hand strength at the body function level was mostly correlated with **participation** at school. We found moderate negative correlations between hand strength asymmetry index and frequency of participation and percent of activities (Figure 3). These correlations indicated that the more affected hand strength was (higher values) the lower the participation at school. At school and in the community, we found a moderate positive correlation between hand strength and percent of desire for change, suggesting that with more impaired hand strength, parents increased their desire for the participation to change.

At the **activity** level, the ABILHAND-Kids positively correlated with **participation** measures at school and in the community. More specifically, we found positive moderate correlations between manual ability and frequency of participation and percent of activities, indicating that participation increased with better manual ability.

Lastly, the **environmental** measures positively correlated with **participation** measures at home, school and in the community, suggesting that the better the socioeconomic status and education level of the family, the higher the participation was, in terms of frequency of participation and involvement.

3.4. Aim 3 – Unique relation between hand strength asymmetry and participation measures

Overall, our study shows that even when controlling for other factors, the severity of hemiparesis is related to participation. More specifically, the partial correlation between hand strength asymmetry and participation frequency and involvement at *home* increased to moderate correlations ($\rho=-0.51$ - -0.64). Similarly, the correlations between hand strength asymmetry and participation involvement and desire to change in the *community* increased to moderate correlations ($\rho=-0.54$ - 0.53), whilst the relation with percent of activities decreased to no correlation. Lastly, the partial correlation between hand strength asymmetry and participation frequency, percent of activities and desire to change at *school* decreased in strength to weak ($\rho=0.43$) and no correlation ($\rho=-0.13$ - -0.20), putting forward the influence of the covariates in the relationship. More details about the results of the partial correlations can be found in Table A.1.

4. Discussion

This study is the first one investigating restrictions in participation in children with AIS (with or without hemiparesis) and its relationship with other components of the ICF-CY. The advantage of having an homogeneous sample (diagnosis of AIS) allows us to draw more specific conclusions whilst it also helps clinicians in their decision making.

We first aimed to investigate differences in participation and other components of the ICF-CY between AIS and typically developing controls. We found that children with hemiparesis due to AIS had a larger lesion than those without hemiparesis and AIS. This result is in agreement with previous studies showing the relationship between outcome severity and lesion size^{34,35}. As assumed, we also found that the hand strength asymmetry index was most impaired in the cohort of children with AIS and hemiparesis, whilst children with AIS without hemiparesis did not show such motor impairments³⁶. However, the manual ability was decreased in both groups of children with AIS (with and without hemiparesis). We measured manual ability with the ABILHAND-Kids, that evaluates the child's ability to manage daily activities that require the use of the upper limbs, whatever the strategies involved²⁸. The latter is important, as it seems that children with AIS who do not develop a hemiparesis may also have difficulties in finding strategies to use their upper limbs efficiently to manage daily activities, which may also affect their quality of life⁷. Although we controlled for lesion size in our analyses, we know that other factors like lesion location³⁷ and brain functional networks^{38,39} play an important role. It is plausible that children with AIS and without hemiparesis had their lesion mostly located in other regions that affected specific brain networks (e.g. dorsal or lateral frontoparietal networks, involved in attention and control, respectively⁴⁰) were more affected. Additionally, children with AIS who do not develop hemiparesis may also suffer cerebral blood flow imbalance⁴¹, which may affect the way they use their upper limbs for uni- and bimanual daily life activities. What exact pathophysiological phenomenon is occurring in children with AIS without hemiparesis to show poor manual ability should be explored in the future. This finding is clinically relevant, as children with AIS without hemiparesis may benefit from physical or occupational therapy programs to increase the use of their upper limbs in daily life activities, improve the used strategies and, consequently, increase their quality of life.

Within the first aim, we also investigated deficits in participation between the three groups. Participation at home and in the community did not differ between groups and the effect sizes were small. Previous studies reported that children with AIS may participate less and have less social interactions than their peers^{9,10}. However, the use of various tests to evaluate participation may be important for the sensitivity of the questionnaire to detect differences. A recent study used the PEM-CY questionnaire and found no differences between children with different AIS onsets (neonatal vs. childhood)¹⁵, and our study included both neonatal and childhood stroke. Nevertheless, participation has been thus far mostly evaluated in children with AIS at this young age, whilst this may have an impact on older adolescents and adults, and even in the transition to adulthood. We think that interfering at the level of participation

at school and academic levels is crucial to aid in the development of independent adults. A study with a larger sample size and different age groups would be needed to confirm our findings.

Interestingly, we found that participation at school differed between groups. First, children with AIS (with or without hemiparesis) participated less frequently than their peers and those with hemiparesis participated also in fewer activities. Remarkably, children with AIS seemed as involved as their peers whenever they participated in the activities, which is in line with previous research¹². In general, parents of children with AIS and hemiparesis seemed to desire that the participation pattern changed, although this was not statistically significant in post-hoc analyses. Altogether, our results point toward a need for a change in school environments. Teachers and animators should pay more attention and be more involved in changing the participation patterns of children with AIS (with or without hemiparesis), according to the desires of the child and their parents. The fact that children with AIS without hemiparesis also have decreased participation requires further attention on which other factors other than sensorimotor function may be playing a role.

The fact that participation differed only at school and not at home or in the community calls for further reflection. At home and in the community, the child may participate more because the peers may be more understanding of the child's condition and needs, which may facilitate participation in these settings. In contrast, bullying and similar experiences at school, which seem to happen often in children with cerebral palsy (due to AIS or other type of brain injury)⁴², may hamper participation in these settings. Although our study included children with young-childhood onset AIS, our findings in AIS disagree with studies including a large, although heterogeneous, population of children with childhood disabilities, which showed reduced participation in all settings for children with disabilities⁴³. Further research will warrant more conclusive answers to this regard.

Our second and third aim are interrelated, and as the second one is not completely novel, we will focus on discussing the results of the unique relation between the severity of hemiparesis and participation measures. Our main finding was that the severity of hemiparesis (measured with hand strength asymmetry) was moderately correlated with participation frequency and involvement at home, as well as participation involvement and desire for change in the community. Our results suggested that with more severe hemiparesis, the participation occurred with lower frequency and involvement, and the parents had higher desire for change that participation pattern. As we used partial correlations, these results show the unique relationship between the severity of hemiparesis and participation measures, controlled by other ICF-CY components (lesion size, manual ability, and socioeconomic status). Previous studies have shown that participation in children with disabilities could be related to lesion characteristics¹⁰, manual ability and activity limitations¹⁶⁻²¹, and socioeconomic status^{16,17}. Our study, in a sample of children with young-childhood onset AIS, shows that even when controlling for these factors, the severity of hemiparesis is related to participation. This fact should be taken onto the rehabilitation process and further investigations on the effectiveness of participation interventions should also explore concomitant changes in hand function.

At school, we found a weak relation between the severity of hemiparesis and the desire for change, although it seemed to be influenced by other factors (lesion size, manual ability, and socioeconomic status). When looking at the bivariate correlations (Figure 3), we can see that participation at school (and in the community) is strongly related to manual ability. It is plausible that the strategies used at school and in the community enhance participation in these settings, whilst participation at home may be more demanding due to potential parental suggestions to use more the impaired hand in different tasks. Lastly, frequency of participation in the community was not related to severity of hemiparesis when controlling for other factors, whilst it was moderately correlated to socioeconomic status. Socioeconomic status may facilitate engagement in physical activities in the community, where they need to be more independent¹⁷, likely due to costs of adapted sports programs and equipment. The socioeconomic status of the families should be considered when intervening on participation with the support of policymakers in young-childhood onset AIS.

Our study may have some clinical implications. The ultimate goal of any rehabilitation program should be to target changes in participation. Understanding what the determinants of participation are in children with AIS is crucial to coordinate a multidisciplinary and individualized treatment strategy. Our study shows that the severity of hemiparesis may be one of the main determinants of participation at home and in the community. We know that family-centered services promote the psychosocial well-being of children and their parents⁴⁴, which has an immediate impact on participation¹⁵. Participation-focused rehabilitation programs, embedded in the family, that also influence physical activity and body functions may be an optimal way to improve participation while acting on the body functions in the long run. Nevertheless, we need to better understand what resources parents need to support these types of interventions⁴⁵ so that they are provided as part of their child's rehabilitation process.

We can address some limitations while interpreting current study results. Whilst we aimed to have a homogenous sample (young-childhood onset AIS diagnosis with and without hemiparesis), our sample size was limited and the results on the participation questionnaire were very variable, which may call for replication in future studies. We evaluated manual ability with the ABILHAND-Kids questionnaire and reported the parents' perspective; in the future, the child's perspective may be very informative, too, and should be considered. For the third aim, we chose for non-parametric partial correlations due to the small sample size, although a regression model would be more appropriate and would allow us to estimate the individual influence of each factor on the model. We focused on impairments on the upper limb, whilst lower limb impairments, especially gait impairments are relevant factors on participation, too. Lastly, whilst we attempted to cover the most common deficits in AIS with the ICF-CY, there are other aspects, such as independence, coping and body image or cognitive and social difficulties (as children with cognitive impairments may be at higher risk of developing problems in the relation with their peers⁴⁶). These aspects should be explored in the future when investigating participation.

5. Conclusion

Children with AIS show more difficulties in participating at school, whilst they participate similarly to their peers in other settings (home and community), regardless of the severity of their hemiparesis. Whilst several components of the ICF-CY (lesion size, manual ability, and socioeconomic status) are related to participation in children with AIS, the severity of hemiparesis seems to play a more important role in participation frequency and involvement at home and in the community, but not at school. These findings highlight the importance of developing participation-focused training strategies for children with young-childhood onset AIS (with and without hemiparesis) that have an additional impact on body functions.

Acknowledgements

The authors thank all the children who participated in the study as well as their parents. Furthermore, a big thank you goes to all co-workers at the Swiss Neuropediatric Stroke Registry: Andrea Capone Mori (Aarau), Alexandre Datta (Basel), Joël Fluss (Geneva), Annette Hackenberg (Zürich), Elmar Keller (Chur), Oliver Maier (St. Gallen), Jean-Pierre Marcoz (Sion), Claudia Poloni (Lausanne), Gian Paolo Ramelli (Bellinzona), Maria Regenyi (Berne), Regula Schmid (Winterthur), and Thomas Schmitt-Mechelke (Lucerne). We would also like to thank Alain Kaelin-Lang for his scientific assistance and Salome Kornfeld and Juan Delgado Rodriguez for their numerous hours of help with clinical data acquisition. In addition, we thank Susan Kaplan for the English language polishing. This study was supported by the Swiss National Foundation (32003B_146894/1), the Anna Müller Grocholski Foundation (Switzerland), the Swiss Foundation for Children with Cerebral Palsy and the Foundation Vinetum (Switzerland). The sponsors had no role in data collection, analysis, or interpretation, nor in the writing of the report or in the decision to submit the article for publication.

Declarations of interests

Declarations of interest: none.

Data availability

Data is available upon reasonable request to the corresponding author.

References

1. Organization WH. International classification of functioning, disability and health: children and youth version: ICF-CY. Published online 2007.
2. Steinlin M, Pfister I, Pavlovic J, et al. The first three years of the Swiss Neuropaediatric Stroke Registry (SNPSR): A population-based study of incidence, symptoms and risk factors. *Neuropediatrics*. 2005;36(2):90-97. doi:10.1055/s-2005-837658
3. Mallick AA, Ganesan V, Kirkham FJ, et al. Childhood arterial ischaemic stroke incidence, presenting features, and risk factors: A prospective population-based study. *The Lancet Neurology*. 2014;13(1):35-43. doi:10.1016/S1474-4422(13)70290-4
4. Cooper AN, Anderson V, Hearps S, et al. Trajectories of motor recovery in the first year after paediatric arterial ischemic stroke. *Pediatrics*. Published online 2017. doi:10.1542/peds.2016-3870
5. Grunt S, Mazenauer L, Buerki SE, et al. Incidence and outcomes of symptomatic neonatal arterial ischemic stroke. *Pediatrics*. Published online 2015. doi:10.1542/peds.2014-1520
6. Kornfeld S, Studer M, Winkelbeiner S, Regényi M, Boltshauser E, Steinlin M. Quality of life after paediatric ischaemic stroke. *Developmental Medicine & Child Neurology*. 2017;59(1):45-51. doi:10.1111/dmcn.13295

7. Caspar-Teuscher M, Studer M, Regényi M, et al. Health related quality of life and manual ability 5 years after neonatal ischemic stroke. *European Journal of Paediatric Neurology*. 2019;23(5):716-722. doi:10.1016/j.ejpn.2019.08.002
8. Gordon AL. Functioning and disability after stroke in children: Using the ICF-CY to classify health outcome and inform future clinical research priorities. *Developmental Medicine and Child Neurology*. 2014;56(5):434-444. doi:10.1111/dmcn.12336
9. Gomes A, Rinehart N, Greenham M, Anderson V. A critical review of psychosocial outcomes following childhood stroke (1995-2012). *Developmental Neuropsychology*. 2014;39(1):9-24. doi:10.1080/87565641.2013.827197
10. Anderson V, Gomes A, Greenham M, et al. Social competence following pediatric stroke: Contributions of brain insult and family environment. *Social Neuroscience*. 2014;9(5):471-483. doi:10.1080/17470919.2014.932308
11. Williams K, Jacoby P, Whitehouse A, et al. Functioning, participation, and quality of life in children with intellectual disability: an observational study. *Developmental Medicine and Child Neurology*. 2021;63(1):89-96. doi:10.1111/dmcn.14657
12. Vila-Nova F, Dos Santos Cardoso de Sá C, Oliveira R, Cordovil R. Differences in Leisure Physical Activity Participation in Children with Typical Development and Cerebral Palsy. *Developmental Neurorehabilitation*. Published online 2020. doi:10.1080/17518423.2020.1819461
13. Everts R, Pavlovic J, Kaufmann F, et al. Cognitive functioning, behavior, and quality of life after stroke in childhood. *Child Neuropsychology*. Published online 2008. doi:10.1080/09297040701792383
14. Steinlin M, Roellin K, Schroth G. Long-term follow-up after stroke in childhood. *European Journal of Pediatrics*. Published online 2004. doi:10.1007/s00431-003-1357-x
15. Greenham M, Gordon AL, Cooper A, et al. Social functioning following pediatric stroke: contribution of neurobehavioral impairment. *Developmental Neuropsychology*. 2018;43(4):312-328. doi:10.1080/87565641.2018.1440557
16. Shikako-Thomas K, Majnemer A, Law M, Lach L. Determinants of participation in leisure activities in children and youth with cerebral palsy: Systematic review. *Physical and Occupational Therapy in Pediatrics*. Published online 2008. doi:10.1080/01942630802031834
17. Shikako-Thomas K, Shevell M, Schmitz N, et al. Determinants of participation in leisure activities among adolescents with cerebral palsy. *Research in Developmental Disabilities*. 2013;34(9):2621-2634. doi:10.1016/j.ridd.2013.05.013
18. Lee BH. Relationship between gross motor function and the function, activity and participation components of the international classification of functioning in children with spastic cerebral palsy. *Journal of Physical Therapy Science*. 2017;29(10):1732-1736. doi:10.1589/jpts.29.1732
19. Beckung E, Hagberg G. Neuroimpairments, activity limitations, and participation restrictions in children with cerebral palsy. *Developmental Medicine & Child Neurology*. 2007;44(5):309-316. doi:10.1111/j.1469-8749.2002.tb00816.x
20. Schenker R, Coster WJ, Parush S. Neuroimpairments, activity performance, and participation in children with cerebral palsy mainstreamed in elementary schools. *Developmental Medicine and Child Neurology*. 2005;47(12):808-814. doi:10.1017/S0012162205001714

21. Lo W, Gordon A, Hajek C, et al. Social competence following neonatal and childhood stroke. *International Journal of Stroke*. 2014;9(8):1037-1044. doi:10.1111/ijis.12222
22. Kornfeld S, Delgado Rodríguez JA, Everts R, et al. Cortical reorganisation of cerebral networks after childhood stroke: impact on outcome. *BMC Neurology*. 2015;15(1):90. doi:10.1186/s12883-015-0309-1
23. Kornfeld S, Yuan R, Biswal BB, et al. Resting-state connectivity and executive functions after pediatric arterial ischemic stroke. *NeuroImage: Clinical*. 2018;17:359-367. doi:10.1016/j.nicl.2017.10.016
24. Oldfield RC. The assessment and analysis of handedness: The Edinburgh inventory. *Neuropsychologia*. 1971;9(1):97-113. doi:10.1016/0028-3932(71)90067-4
25. Wintermark M, Hills NK, DeVeber GA, et al. Arteriopathy diagnosis in childhood arterial ischemic stroke: Results of the vascular effects of infection in pediatric stroke study. *Stroke*. Published online 2014. doi:10.1161/STROKEAHA.114.007404
26. Sims JR, Gharai LR, Schaefer PW, et al. ABC/2 for rapid clinical estimate of infarct, perfusion, and mismatch volumes. *Neurology*. Published online 2009. doi:10.1212/WNL.0b013e3181aa5329
27. Abgottspon S, Steiner L, Slavova N, Steinlin M, Grunt S, Everts R. Relationship between motor abilities and executive functions in patients after pediatric stroke. *Appl Neuropsychol Child*. Published online May 27, 2021:1-11. doi:10.1080/21622965.2021.1919111
28. Arnould C, Penta M, Renders A, Thonnard J-LJ-L. ABILHAND-Kids: a measure of manual ability in children with cerebral palsy. *Neurology*. 2004;63(6):1045-1052. doi:10.1212/01.WNL.0000138423.77640.37
29. Schenker R, Coster W, Parush S. Participation and activity performance of students with cerebral palsy within the school environment. *Disability and Rehabilitation*. 2005;27(10):539-552. doi:10.1080/09638280400018437
30. Coster W, Law M, Bedell G, Khetani M, Cousins M, Teplicky R. Development of the participation and environment measure for children and youth: Conceptual basis. *Disability and Rehabilitation*. 2012;34(3):238-246. doi:10.3109/09638288.2011.603017
31. Svedberg P, Nygren JM, Staland-Nyman C, Nyholm M. The validity of socioeconomic status measures among adolescents based on self-reported information about parents occupations, FAS and perceived SES; Implication for health related quality of life studies. *BMC Medical Research Methodology*. 2016;16(1):48. doi:10.1186/s12874-016-0148-9
32. Critchlow DE, Fligner MA. On distribution-free multiple comparisons in the one-way analysis of variance. *Communications in Statistics - Theory and Methods*. 1991;20(1):127-139. doi:10.1080/03610929108830487
33. Tomczak M, Tomczak E. *The Need to Report Effect Size Estimates Revisited. An Overview of Some Recommended Measures of Effect Size*. Vol 1.; 2014.
34. Wiedemann A, Pastore-Wapp M, Slavova N, et al. Impact of stroke volume on motor outcome in neonatal arterial ischemic stroke. *European Journal of Paediatric Neurology*. 2020;25:97-105. doi:10.1016/j.ejpn.2019.10.006
35. Slavova N, Shojai MP, Everts R, Wiest R, Steinlin M, Grunt S. Is Asymmetry of the Pons Associated with Hand Function and Manual Ability after Arterial Ischemic Stroke in Children? *Neuropediatrics*. 2019;50(3):138-145. doi:10.1055/s-0039-1678610

36. Dunbar M, Kirton A. Perinatal stroke: mechanisms, management, and outcomes of early cerebrovascular brain injury. *The Lancet Child and Adolescent Health*. 2018;2(9):666-676. doi:10.1016/S2352-4642(18)30173-1
37. Maillieux L, Klingels K, Fiori S, et al. How does the interaction of presumed timing, location and extent of the underlying brain lesion relate to upper limb function in children with unilateral cerebral palsy? *European journal of paediatric neurology: EJPN: official journal of the European Paediatric Neurology Society*. 2017;21(5):763-772. doi:10.1016/j.ejpn.2017.05.006
38. Steiner L, Homan S, Everts R, et al. Functional connectivity and upper limb function in patients after pediatric arterial ischemic stroke with contralateral corticospinal tract wiring. *Scientific Reports*. 2021;11(1):5490-5490. doi:10.1038/s41598-021-84671-2
39. Simon-Martinez C, Jaspers E, Alaerts K, et al. Influence of the corticospinal tract wiring pattern on sensorimotor functional connectivity and clinical correlates of upper limb function in unilateral cerebral palsy. *Scientific Reports*. 2019;9(1):8230. doi:10.1038/s41598-019-44728-9
40. van den Heuvel MP, Hulshoff Pol HE. Exploring the brain network: a review on resting-state fMRI functional connectivity. *European neuropsychopharmacology: the journal of the European College of Neuropsychopharmacology*. 2010;20(8):519-534. doi:10.1016/j.euroneuro.2010.03.008
41. Leistner R, Everts R, Federspiel A, et al. Cerebral blood flow imbalance is associated with motor outcome after pediatric arterial ischemic stroke. *PLoS ONE*. 2019;14(10). doi:10.1371/journal.pone.0223584
42. Stang K, Fraaney B, Tann B, Ehrlich-Jones L, Deike D, Gaebler-Spira D. Understanding children with cerebral palsy and bullying: A mixed methods approach. *Child: Care, Health and Development*. 2020;46(3):303-309. doi:10.1111/cch.12740
43. Coster W, Bedell G, Law M, et al. Psychometric evaluation of the Participation and Environment Measure for Children and Youth. *Developmental Medicine and Child Neurology*. 2011;53(11):1030-1037. doi:10.1111/j.1469-8749.2011.04094.x
44. King S, Teplicky R, King G, Rosenbaum P. Family-Centered Service for Children With Cerebral Palsy and Their Families: A Review of the Literature. Published online 2004. doi:10.1016/j.spen.2004.01.009
45. Piškur B, Beurskens AJ, Jongmans MJ, et al. *Parents' Actions, Challenges, and Needs While Enabling Participation of Children with a Physical Disability: A Scoping Review*. Vol 12.; 2012. doi:10.1186/1471-2431-12-177
46. Bottcher L. Children with spastic cerebral palsy, their cognitive functioning, and social participation: A review. *Child Neuropsychology*. Published online 2010. doi:10.1080/09297040903559630

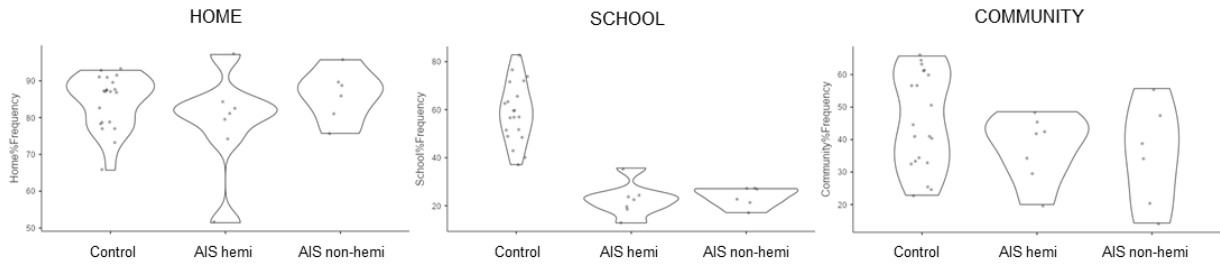
Appendices

Document A.1. Questions used in the questionnaire of Family Affluence Scale (questions 1-4) and parents' educational level (questions 5-6). The numbers in brackets indicate the score given for each response.

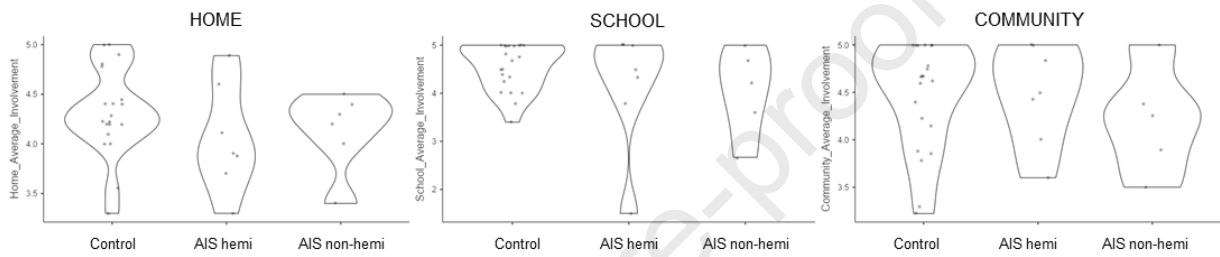
1. Does your child have a room all to themselves?
 - a. No (0)
 - b. Yes (1)
2. Do you own a vehicle as a family (car, van or camper)?
 - a. No (0)
 - b. Yes, one (1)
 - c. Yes, two (2)
 - d. Yes, more than two (3)
3. How often did you go on holiday with your child in the last 12 months?
 - a. Not at all (0)
 - b. Once (1)
 - c. Twice (2)
 - d. More than twice (3)
4. How many computers do you own as a family?
 - a. None (0)
 - b. One (1)
 - c. Two (2)
 - d. More than two (3)
5. What degree does the mother have?
 - a. No degree (0)
 - b. Junior high school (intermediate school certificate) (1)
 - c. Secondary school (2)
 - d. Middle school (3)
 - e. University (4)
6. What degree does the father have?
 - a. No degree (0)
 - b. Junior high school (intermediate school certificate) (1)
 - c. Secondary school (2)
 - d. Middle school (3)
 - e. University (4)

Figure A.1. Scatter and violin plots of the participation data (frequency, involvement, activities, and desire for change) derived from the PEM-CY questionnaire in each domain (home, school, and community) in each cohort (control, AIS with hemiparesis and AIS without hemiparesis).

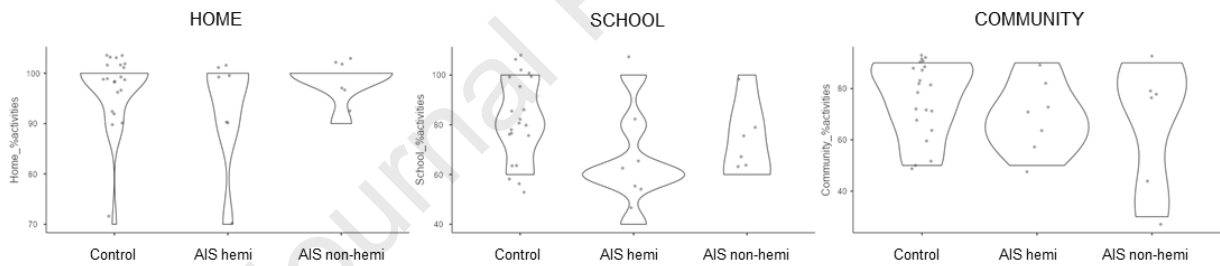
Percent of frequency



Involvement



Percent of activities



Percent of desire for change

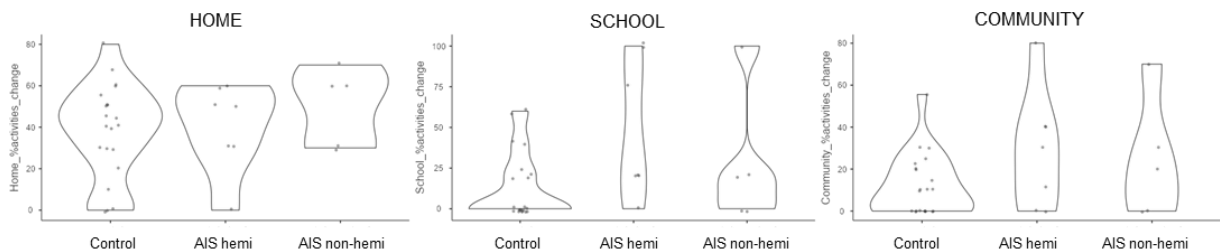


Table A.1. Relation between hand strength asymmetry and participation based on the zero-order bivariate correlations and partial correlation (controlling for lesion size, ABILHAND-Kids and SES) with Spearman's rho correlation coefficients, as well as the change in correlation coefficients.

		Hemiparesis severity (Hand strength asymmetry)					
		Zero-order bivariate correlation		Partial correlation (lesion size, ABILHAND-Kids and SES)		Change in correlation coefficient from zero-order to partial correlations	
		rho	interpretation	rho	interpretation		
Participation at home	% Frequency	-0.40	Weak	-0.51	Moderate	▲	
	Involvement	-0.23	None	-0.64 [‡]	Moderate	▲	
	% of activities	-0.08	None	0.11	None	▬	
	% of desire for change	0.16	None	0.16	None	▬	
Participation at school	% Frequency	-0.47	Weak	-0.13	None	▼	
	Involvement	-0.02	None	0.02	None	▬	
	% of activities	-0.54 [‡]	Moderate	-0.21	None	▼	
	% of desire for change	0.55 [‡]	Moderate	0.43	Weak	▼	
Participation in the community	% Frequency	-0.05	None	0.17	None	▬	
	Involvement	-0.09	None	-0.54	Moderate	▲	
	% of activities	-0.37	Weak	0.03	None	▼	
	% of desire for change	0.39	Weak	0.53	Moderate	▲	

The icons represent how the interpretation of the correlation coefficients changed (▬ no change, ▲ increase in the correlation coefficient, and ▼ decrease in the correlation coefficient) from the simple bivariate correlation to the partial correlation, controlling for the indicated variables. If no change, the covariates held constant had little influence on the studied relationship, whilst if there was either an increase or decrease, the variables had an influence between hand strength asymmetry and participation. [‡] Trend toward significant correlation ($p < 0.07$).

Participation after childhood stroke: Is there a relationship with lesion size, motor function and manual ability?

Cristina Simon-Martinez^{1,2}, Sandeep Kamal¹, Fabienne Frickmann¹, Leonie Steiner^{1,3}, Nedelina Slavova^{4,5,6}, Regula Everts¹, Maja Steinlin¹, Sebastian Grunt¹

¹ Division of Neuropediatrics, Development and Rehabilitation, University Children's Hospital, Inselspital, Bern University Hospital, University of Bern, Bern, Switzerland

² Institute of Information Systems, University of Applied Sciences Western Switzerland (HES-SO) Valais-Wallis, Sierre, Switzerland

³ Graduate School for Health Sciences, University of Bern, Bern, Switzerland

⁴ Institute of Diagnostic and Interventional Neuroradiology, Inselspital, Bern University Hospital, and University of Bern, Switzerland

⁵ Department of Diagnostic, Interventional and Pediatric Radiology, Inselspital, Bern University Hospital, University of Bern, Switzerland

⁶ Pediatric Radiology, University Children's Hospital Basel and University of Basel, Switzerland

Highlights:

- Children with stroke participate less frequently at school but are equally involved.
- Decreased participation at school is not related to hemiparesis severity.
- Participation at home and in the community are related to hemiparesis severity.

Participation after childhood stroke: Is there a relationship with lesion size, motor function and manual ability?

Cristina Simon-Martinez^{1,2}, Sandeep Kamal¹, Fabienne Frickmann¹, Leonie Steiner^{1,3}, Nedelina Slavova^{4,5,6}, Regula Everts¹, Maja Steinlin¹, Sebastian Grunt¹

¹ Division of Neuropediatrics, Development and Rehabilitation, University Children's Hospital, Inselspital, Bern University Hospital, University of Bern, Bern, Switzerland

² Institute of Information Systems, University of Applied Sciences Western Switzerland (HES-SO) Valais-Wallis, Sierre, Switzerland

³ Graduate School for Health Sciences, University of Bern, Bern, Switzerland

⁴ Institute of Diagnostic and Interventional Neuroradiology, Inselspital, Bern University Hospital, and University of Bern, Switzerland

⁵ Department of Diagnostic, Interventional and Pediatric Radiology, Inselspital, Bern University Hospital, University of Bern, Switzerland

⁶ Pediatric Radiology, University Children's Hospital Basel and University of Basel, Switzerland

Conflict of Interest

The authors declare no competing interests.